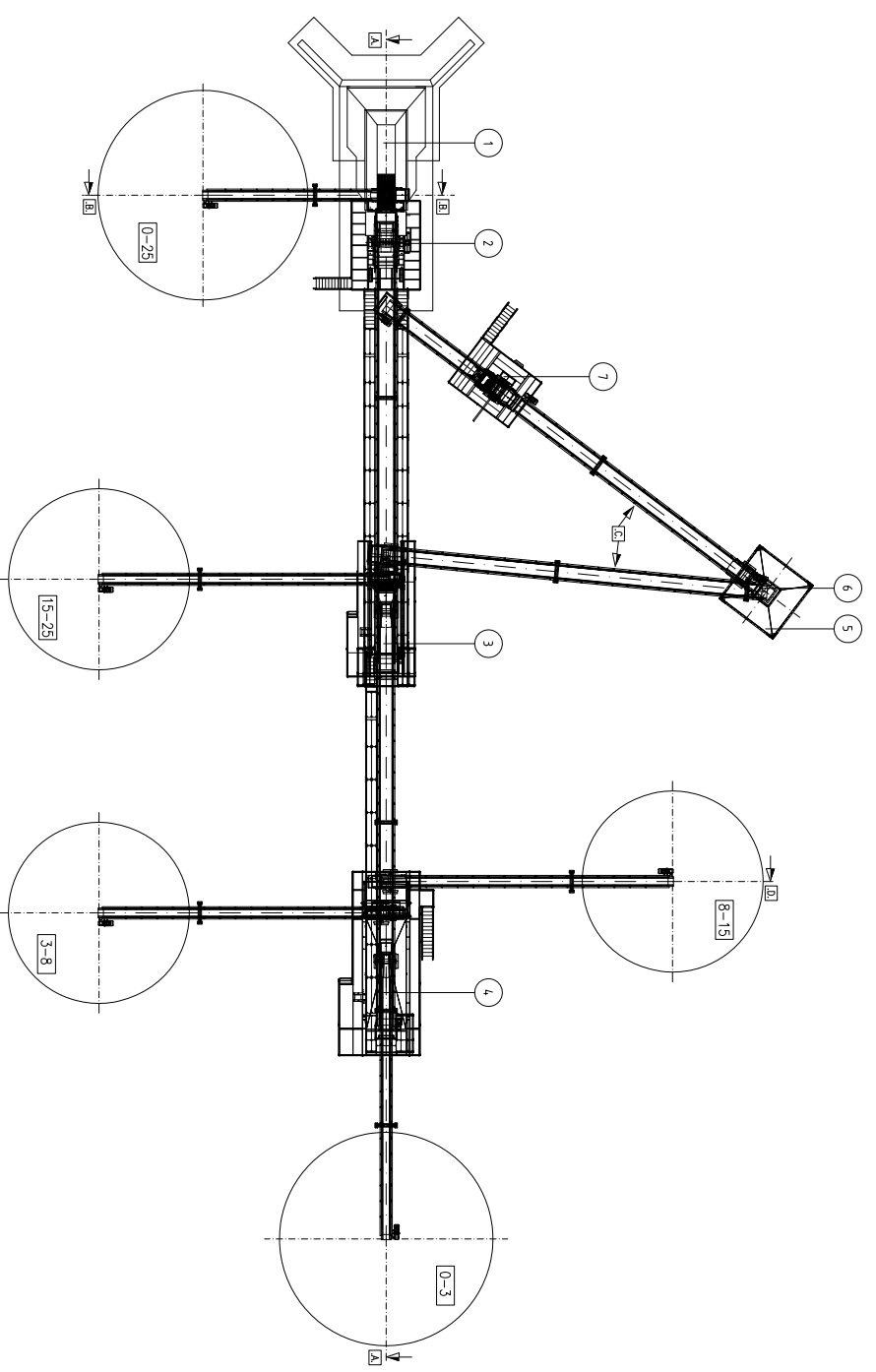
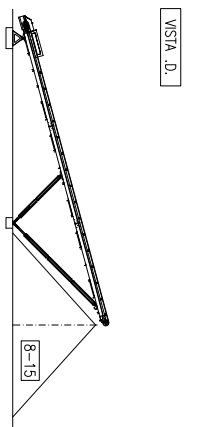
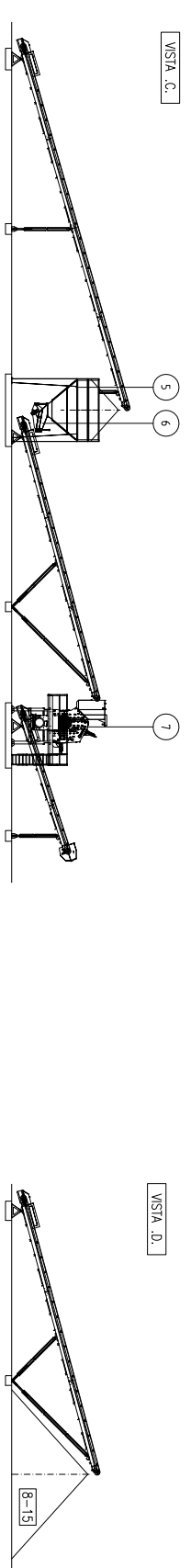
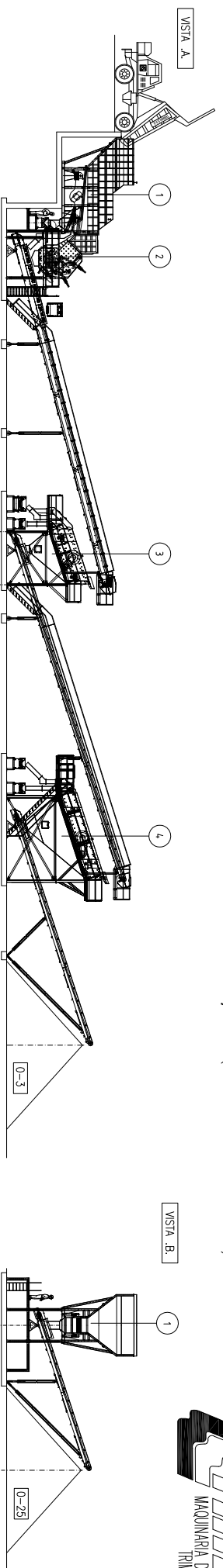


# INSTALACION FIJA, VIA SECA, CALIZA, 280tn/h (FSC-280-I-A)



REF.	DESCRIPCIÓN	CANTIDAD
7	MOLINO IMPACTOR IST-4	1
6	ALIMENTADOR VIBRANTE AVT-220	1
5	TOLVA 30m <sup>3</sup>	1
4	CRIBA VIBRANTE CVT-2270-II	1
3	CRIBA VIBRANTE CVT-1545-III	1
2	MOLINO IMPACTOR PRIMARIO IPT-7	1
1	ALIMENTADOR PRECRIBADOR APT-511-II	1